

Sola SkyLights



Sola PVC Roof Windows • Sola SkyTunnel • SolaRooflights

Sola SkyLights

Sola PVC Roof Windows

Premium Roof Window

A first in the UK, a PVC top third roof window, available in gold, bronze or beach along with traditional white.

Sola Roof Windows are particularly useful in areas with high moisture content or humidity such as kitchens and bathrooms. They have good acoustic and thermal insulation and have no need for maintenance. Rounded profile for an exquisite look and feel that blends beautifully with standard PVC window and doors.

The patented hardware system guarantees full stability of the window in all its opening positions.

The opening positions are

HALF – This allows the sash to be opened between 0 and 30 degrees

OPEN – This allows the sash to be opened to 45 degrees

CLEANING – This allows the sash to be reversed to 120 degrees for easy cleaning.

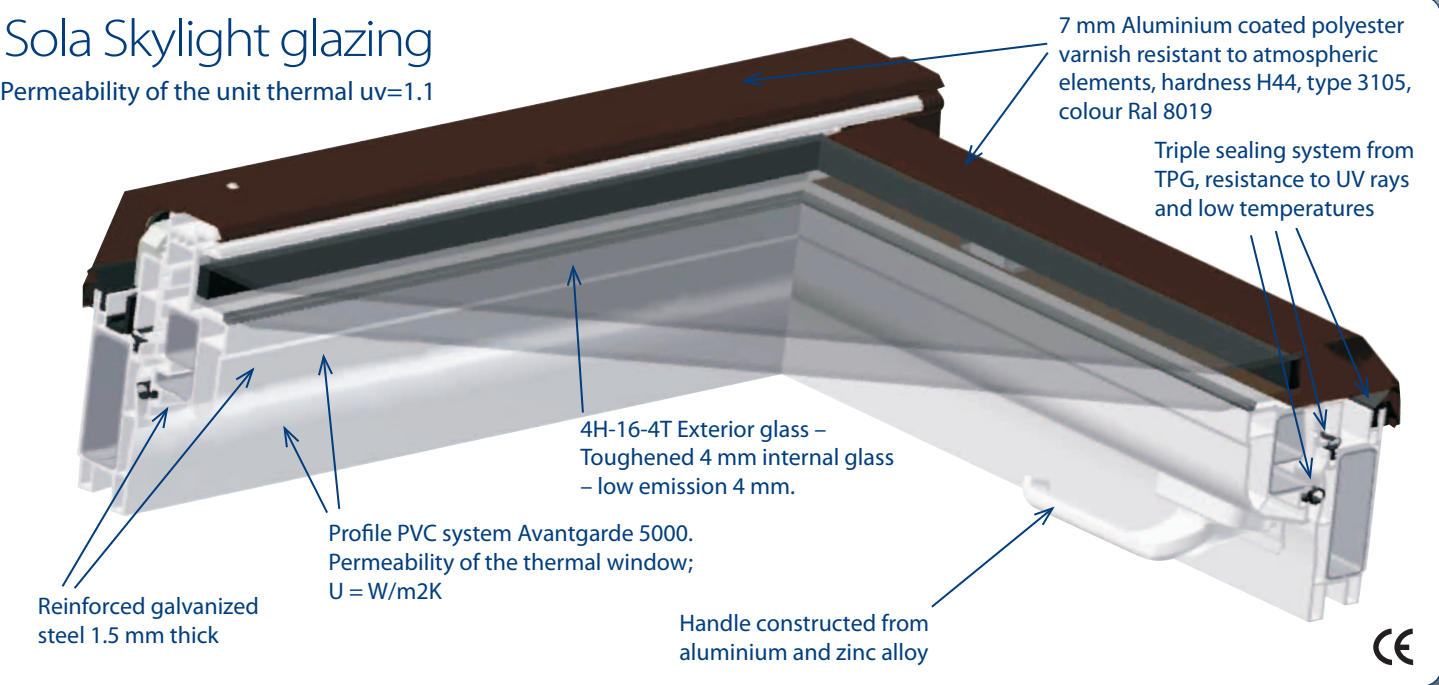
A trickle vent is located in the top of the frame allows fresh air to circulate while the window is securely closed.

Advantages

- PVC profile has excellent age and dirt resisting properties.
- Reinforced with galvanized steel core in all aspects of the window in order to improve the static and mounting of hardware.
- Exterior covers are made from polyester coated aluminium.
- The handle is located at the bottom of the window allowing the window to be fitted higher in the roof and still maintain manual control.
- The window can be fitted on slopes between 15 and 75 degrees.
- The window is fitted with 3 seals giving excellent protection from the weather.

Sola Skylight glazing

Permeability of the unit thermal uv=1.1



Skylight sizes

| CODE | SKW1 | SKW2 | SKW3 | SKW4 | SKW5 | SKW6 | SKW7 | SKW8 | SKW9 | SKW10 |
|--------------------|---------|---------|---------|----------|---------|----------|----------|----------|----------|-----------|
| SIZE | 55 x 78 | 55 x 98 | 66 x 98 | 66 x 118 | 78 x 98 | 78 x 118 | 78 x 140 | 94 x 118 | 94 x 140 | 114 x 118 |
| CODE | SKT1 | SKT2 | SKT3 | SKT4 | SKT5 | SKT6 | SKT7 | SKT8 | SKT9 | SKT10 |
| TILE FLASHING | | | | | | | | | | |
| CODE | SKS1 | SKS2 | SKS3 | SKS4 | SKS5 | SKS6 | SKS7 | SKS8 | SKS9 | SKS10 |
| SLATE FLASHING | | | | | | | | | | |
| Window Weight | 26.00 | 28.00 | 34.00 | 38.00 | 40.00 | 45.00 | 48.00 | 48.00 | 57.00 | 66.00 |
| Tile Flashing Wgt | 2.50 | 2.50 | 3.50 | 3.50 | 3.50 | 4.00 | 4.00 | 4.00 | 5.00 | 5.50 |
| Slate Flashing Wgt | 2 | 2 | 3 | 3 | 3 | 3 | 3 | 3.5 | 4 | 4.5 |

Sola PVC Roof Windows features

Escape Window Skylight Loft

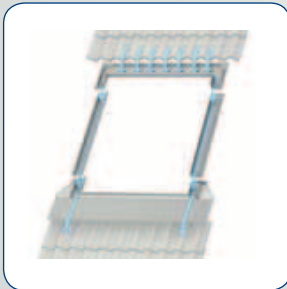
This window comes with a side opener, which allows escape onto the roof in case of an emergency.

Skylight Loft is based on the Premium Sola Roof window construction. It is made up of the same material as all our roof windows.

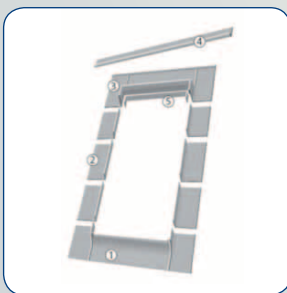
Comes in one size only-
550 mm x 980 mm

Sola Roof Window is available with three kinds of flashing:

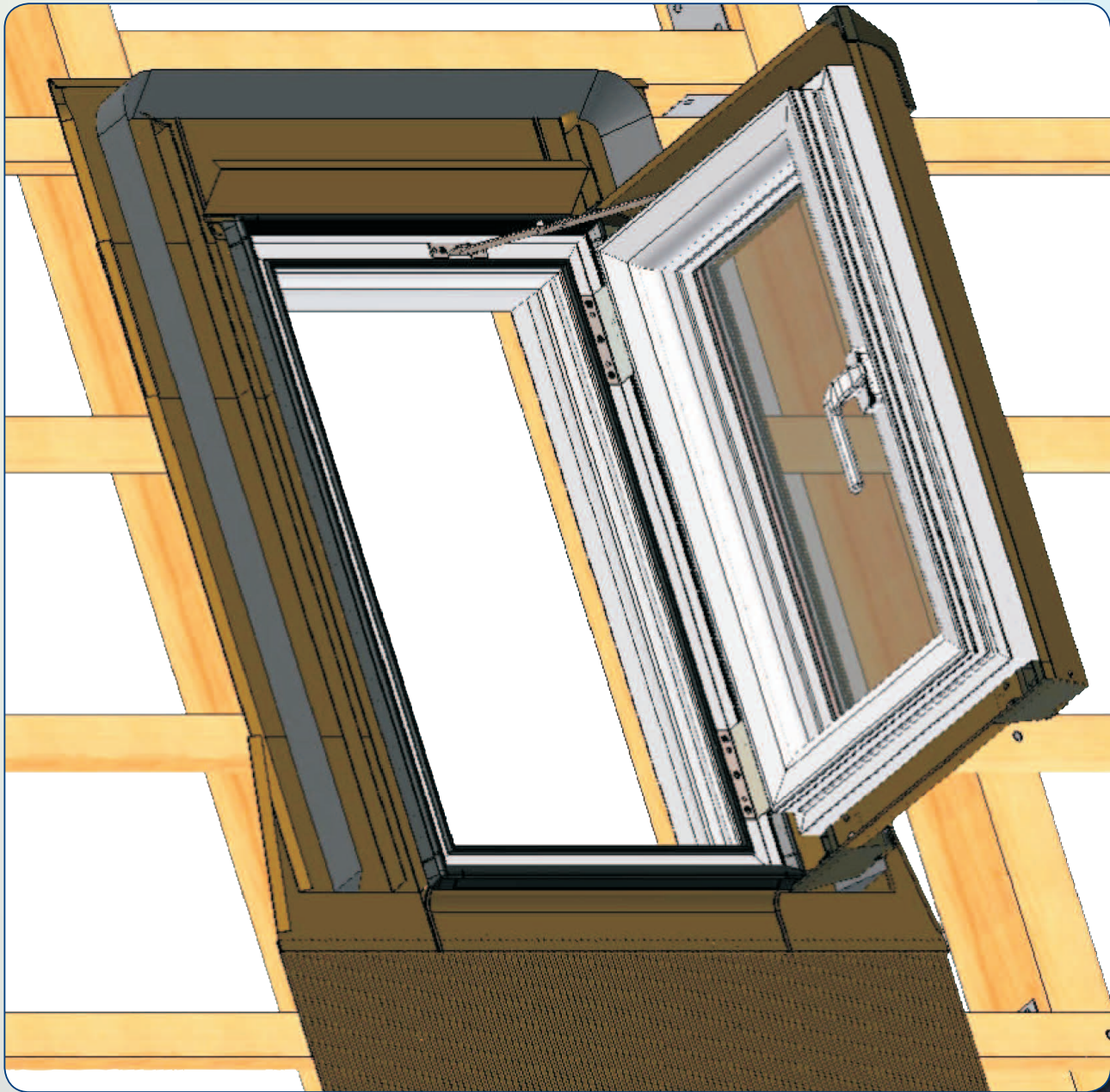
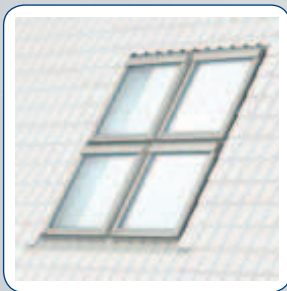
Tile Flashing



Slate Flashing



Combi Flashings—which allow
2 or more windows to be placed
in groups—to order.

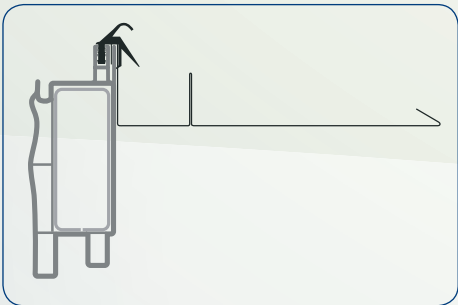


Flashings are an integral part of a properly installed roof window. They secure and seal the whole unit against weather conditions in order to protect against water and wind intrusion. Flashings are made of aluminium plate.

The main advantage of the flashing in Sola Roof Windows is its innovative connection to the frame.

Unlike traditional roof windows which uses nails and screws the Sola system

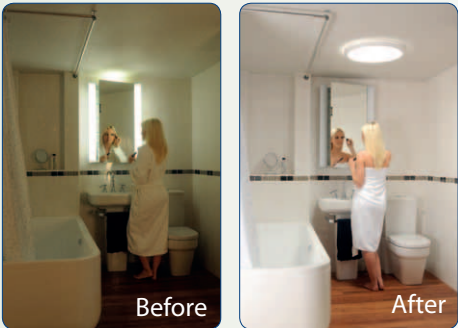
clips into a slot in the window frame and is then covered by a tough rubber gasket.



Sola Skylights

Let light in Sky Tunnel

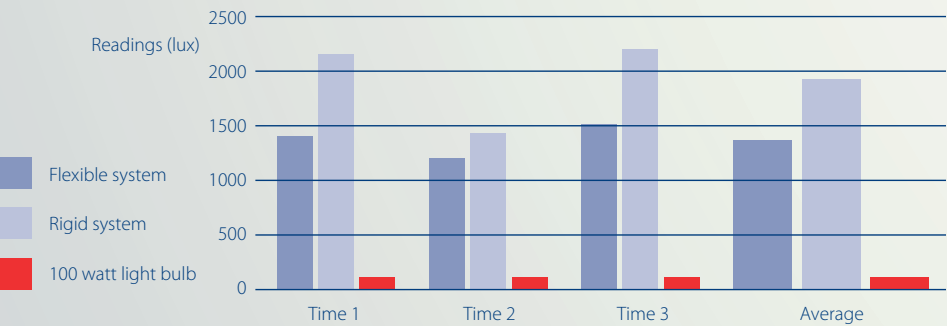
Sola Skylights offer one of the easiest and most affordable ways to bring daylight into traditionally low or no-light interiors, at home and in the working environment. The Sola Sky Tunnel system allows natural light into darkened rooms via a rooflight and a rigid or flexible reflective tube.



How much light can I get?

Tests carried out in the UK (by Durham University) prove that anything up to twelve times the equivalent of a 100 watt bulb can be achieved with 3 m of Flexi-tube run on the 550 mm diameter unit.

As with all natural light providers, this depends on the exposure to the available daylight (south facing is best) also the length of Flexi-tube, time of day, time of year etc. The larger diameter Sky Tunnel installed the more volume of light will be transmitted.



Light intensity at three times during a day

What size and type do I need?

The location of the roof dome should be directly above or as near as possible to the ceiling diffuser and as near as possible to the roof ridge. Minimise bends in the Flexi-tube, as this will affect efficient light transmission.

It is possible to fit the Sky Tunnel if you have a good knowledge of DIY, alternatively use a roof specialist.

There are key factors that should be considered; colour scheme of interior,

on which elevation the roof dome is going to be positioned—South, East, or West—and also the length of tube.

The table below is a guide to location and size of system.

| | Ceiling opening size | | |
|------------|--|---|---|
| | 343 mm (Diameter) | 457 mm (Diameter) | 535 mm (Diameter) |
| Flexi-tube | En suite, WC, Walk-in-wardrobe Suitable for rooms 2 m x 2 m | Bathroom, Hallway, Small Landings Suitable for rooms 3.5 m x 3.5 m | Living areas, Large Landings, Kitchen Suitable for rooms 5 m x 5 m |
| Rigid tube | Bathroom, Hallway, Small Landing Suitable for rooms 4 m x 4 m | Bathroom, Landing, Offices, Corridors Suitable for rooms 5 m x 5 m | Commercial & retail, Corridors, Offices Suitable for rooms 6 m x 6 m |

The Sky Tunnel – rigid or flexible

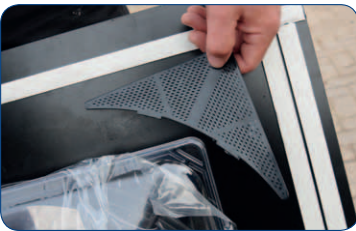
Sky Tunnel is available in either rigid or flexible formats. The hard wearing highly polished rigid tubes are 98% reflective and suitable for commercial installations where the ceiling/loft configuration allows—the higher the ceiling the better the light levels. The flexible tube is more commonly used in domestic installations where the roof configuration makes it impossible to use the rigid version.



And a breath of fresh air

Ventilation as standard

Sky Tunnels is unique in that has built in ventilation option. Should this be required, especially useful in installations such as bathrooms, the small triangular grids can be inserted in the external rooflight prior to installation.



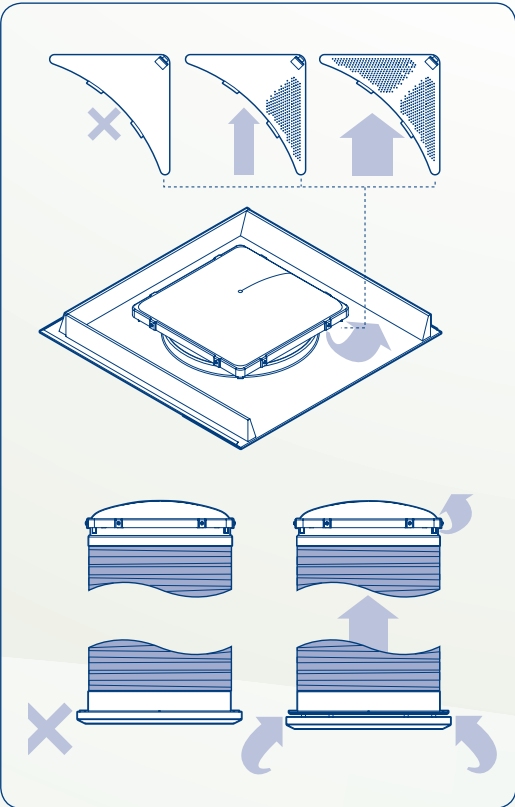
Two options are available depending on how much ventilation is required. If none is required then the standard version

without the gridding should be left in place.

Ventilation on the internal rooflight is achieved by



placing magnetic spacers between the rooflight and the fixing collar. This design is unique to Sola Sky Tunnel and very easy to install.

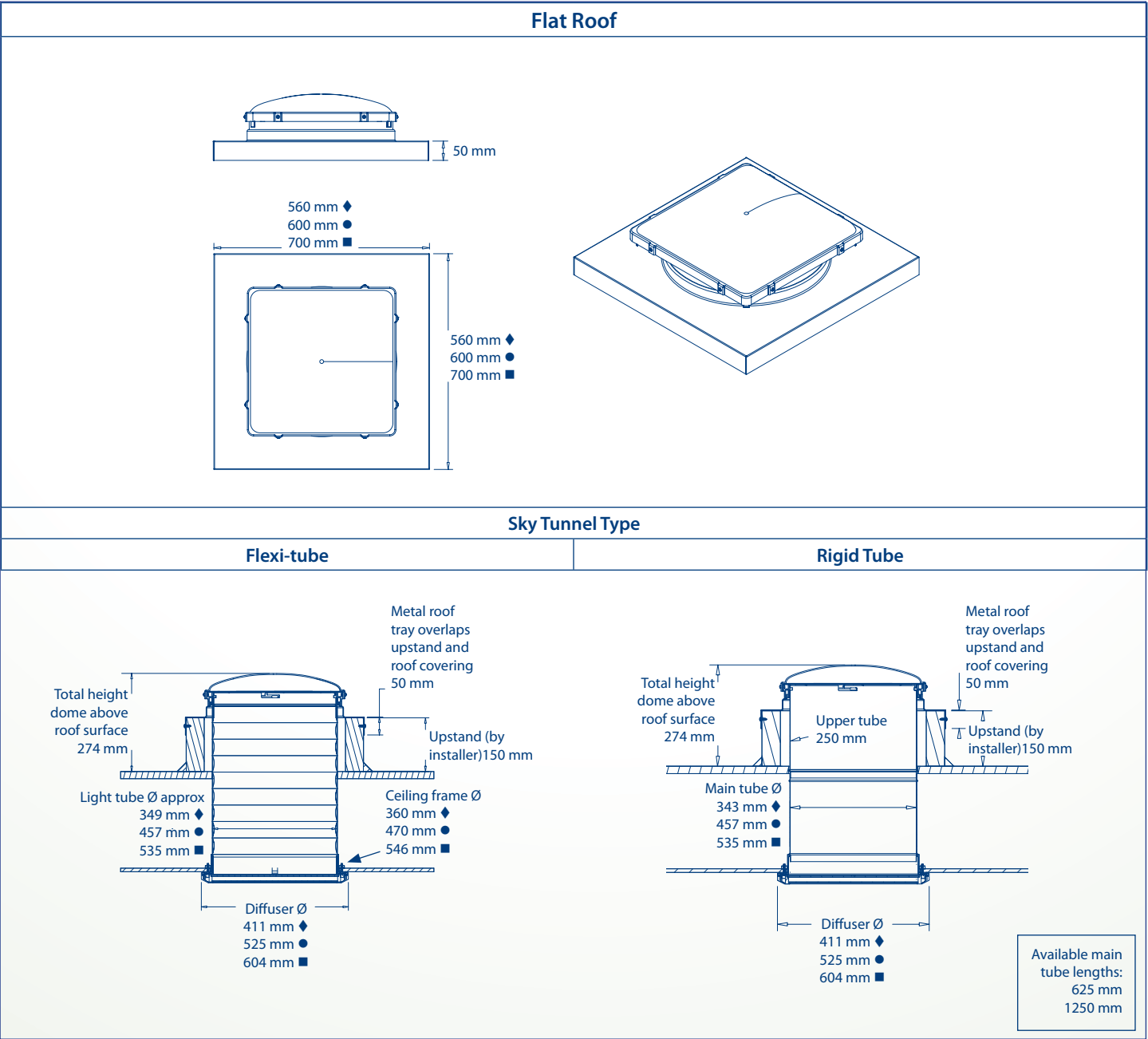
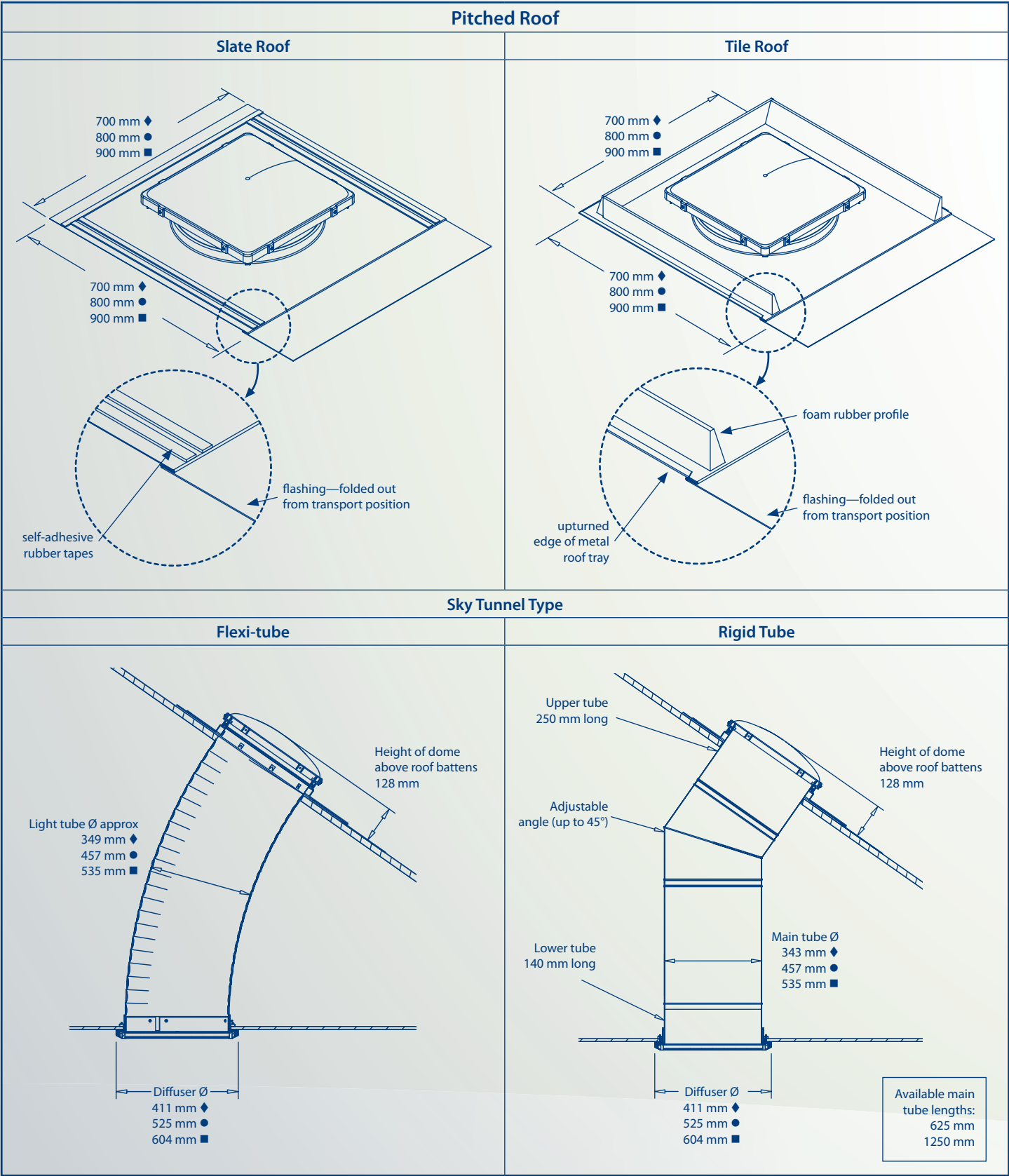


Specification

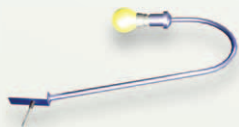
Sky Tunnel is available in three sizes. When specifying using these drawings, please ensure the correct dimensions are used by following the symbols:



- 349 mm diameter ◆
- 457 mm diameter ●
- 535 mm diameter ■



Sola accessories



Sola Skylights Electrical Light Kit
This kit removes the need for a separate light fitting in a small room such as WC or Bathroom.



Ceiling Diffuser Fire Collar
Protects against fire spread by collapsing the Sky Tunnel. Gives up to four hours fire certification.



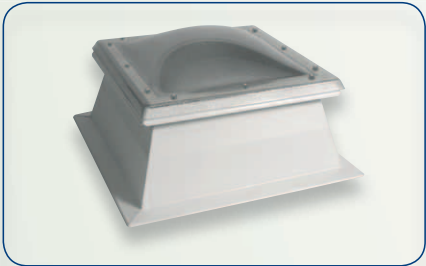
Security collar
Fitted to the roof dome to prevent intrusion.

Sola rooflights

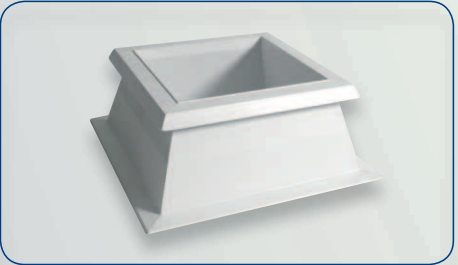
The Sola range

Our standard rooflight range offers you the versatility of a tailor-made solution, without the additional cost or lead time. Simply select the glazing element, upstand or adaptor kerb and size you require.

All Sola Skylights glazing elements are manufactured in high-quality UV-protected polycarbonate and are available as single-, double- and triple-skin units in sizes ranging from 600 mm x 600 mm to 1800 mm x 1800 mm.



Glazing includes pyramid and domed shapes with burglar bar option (as shown at below)



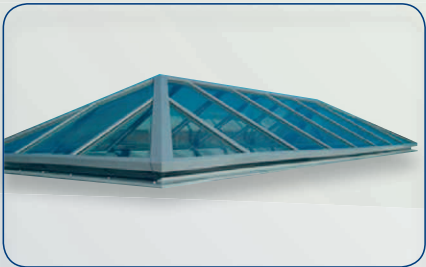
Square and circular upstands are available



Access hatches are available



Barrel vault



Roof glazing system



Clear
82% light transmission



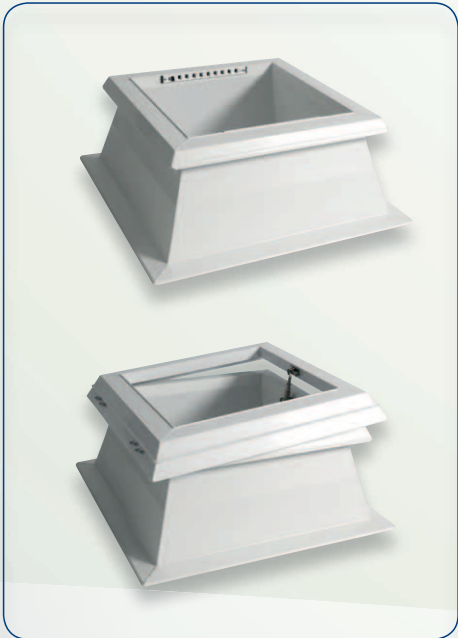
Diffused
81% light transmission



Bronze anti-glare
50% light transmission



Opal
50% light transmission



Ventilation options include vented upstands and manually operated wormgear mechanisms

Sola range sizes

| Nominal kerb Overall size (mm) | Clear Light Size (mm) |
|-----------------------------------|--------------------------|
| Square | |
| 600 x 600 | 450 x 450 |
| 750 x 750 | 600 x 600 |
| 900 x 900 | 750 x 750 |
| 1000 x 1000 | 850 x 850 |
| 1200 x 1200 | 1050 x 1050 |
| 1350 x 1350 | 1200 x 1200 |
| 1500 x 1500 | 1350 x 1350 |
| 1650 x 1650 | 1500 x 1500 |
| 1800 x 1800 | 1650 x 1650 |
| Rectangular | |
| 600 x 900 | 450 x 750 |
| 600 x 1200 | 450 x 1050 |
| 600 x 1500 | 450 x 1350 |
| 600 x 1800 | 450 x 1650 |
| 600 x 2400 | 450 x 2250 |
| 900 x 1200 | 1050 x 750 |
| 900 x 1500 | 750 x 1350 |
| 900 x 1350 | 750 x 1200 |
| 900 x 1500 | 750 x 1350 |
| 900 x 1800 | 750 x 1650 |
| 900 x 2400 | 750 x 2250 |
| 1000 x 1500 | 850 x 1350 |
| 1000 x 2000 | 850 x 1850 |
| 1200 x 1500 | 1050 x 1350 |
| 1200 x 1800 | 1050 x 1650 |
| 1200 x 2400 | 1050 x 2250 |
| 1500 x 2400 | 1350 x 2250 |
| 1800 x 2400 | 1650 x 2250 |
| Circular | |
| 600 Diameter | |
| 750 Diameter | |
| 900 Diameter | |
| 1050 Diameter | |
| 1200 Diameter | |
| 1350 Diameter | |
| 1500 Diameter | |
| 1650 Diameter | |
| 1800 Diameter | |
| 1800 Diameter | |

The Sola Rooflights are manufactured using top quality UV protected polycarbonate. The roof kerbs are available in PVCu, galvanised steel and aluminium. The table above shows our standard size range, however we can also design and manufacture non standard sizes domes, pyramids and barrel vault rooflights, please call us on **0800 389 7361** or visit www.solarskylight.com for more details.

You light up my life

Why choose Sola?

Sola Skylights have been delivering innovation and quality to the building trade and end users of skylights since its foundation in 1997.

Sola Skylights offer the largest range of natural light providers in the UK and Ireland, including light tunnels, roof lights and roof glazing.

Sola Skylights have invested in ISO 9001:2000 and BBA accreditation, demonstrating a commitment to best practice and quality in manufacturing, customer service and design.

Whatever your lighting requirements, Sola Skylights will have the solution to meet your needs. If you have a specific project for which you require more information, a specification or a quotation, then Sola Skylights technical staff will be able to help you.

It's our mission...

- To provide quality products.
- To always pursue the most innovative materials in our design and manufacturing.
- To always provide the best value for money and customer satisfaction.
- To provide excellent customer advice and services in specification.

Ecological sustainability

Our entire product range—Sky Tunnel, Sola Rooflights and Sola Hybrid Lighting—are designed to be environmentally friendly. None of them have a carbon footprint once installed as they only rely on light coming from the sun. Using our products will bring not only the joy of natural daylight and healthier living, but will also improve energy efficiency and reduce the carbon footprint of your building.



Call us now!

0800 389 7361

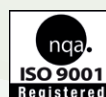
Delivering innovation and quality to the building trade and end users of Skylights since its foundation in 1997.

Copyright © 2010 Sola Skylights UK Limited. All rights reserved.

Sola Skylights UK Limited

Unit 9, Sola House, Dabble Duck Industrial Estate,
Shildon, Co. Durham, DL4 2RF

Tel: 0800 389 7361 | www.solaskylights.com



Sola Skylights